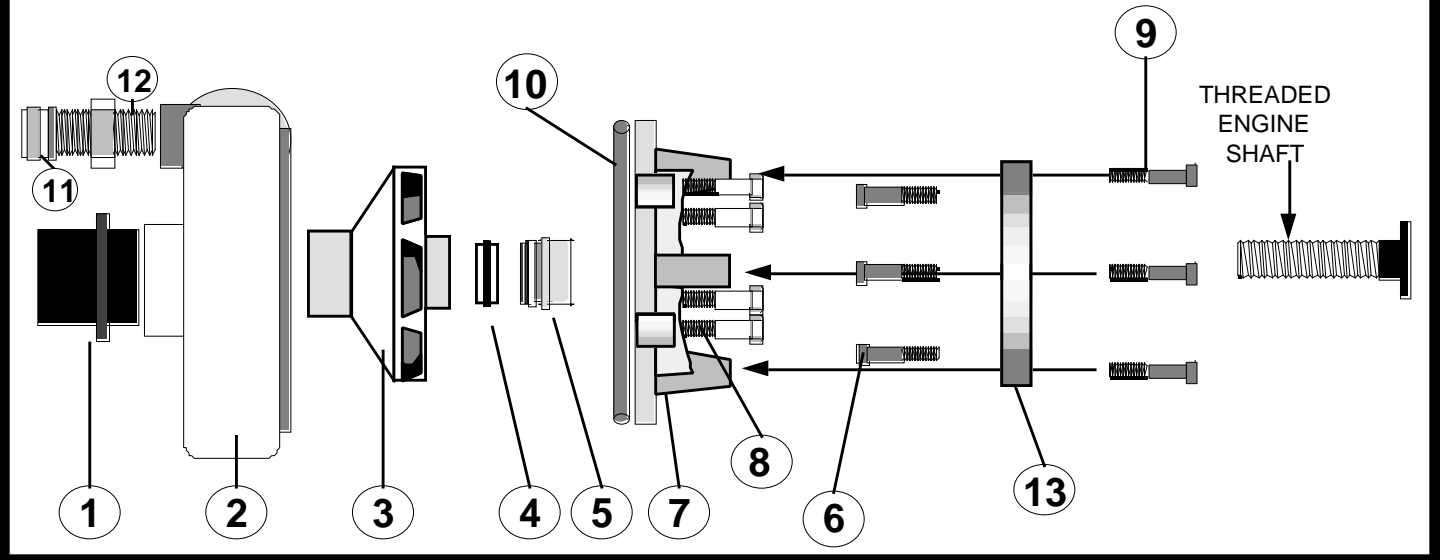


CENTRIFUGAL PUMP ASSEMBLY P280, P350 and P350S PUMPS



ITEM	DESCRIPTION	QUANTITY	P280 PART NO.	P350 PART NO.	P350S PART NO.
1	HOSE ADAPTER	1	HA25	N/A	N/A
2	OUTER HOUSING	1	201	301	301S
3	IMPELLAR	1	202	352	352S
4	PUMP SEAL (CERAMIC SEAL)	1	WPS3 (PT.1)	WPS3 (PT.1)	WPS3 (PT.1)
5	PUMP SEAL (SPRING & CASING)	1	WPS3 (PT.2)	WPS3 (PT.2)	WPS3 (PT.2)
6	ENGINE MOUNTING BOLTS	3	EB	EB	EB
7	3 LEG MOUNTING BRACKET	1	207	207	207
8	HOUSING BOLT	4	HB	HB	HB
8A	HOUSING BOLT WASHERS	4	HW	HW	HW
9	3 LEG MTG. BRACKET BOLTS	3	AB	AB	AB
10	GASKET	1	208	208	208
11	FLUSHER ADAPTER CAP	1	FAC	FAC	FAC
12	FLUSHER ADAPTER	1	FA	FA	FA
12A	FAC RUBBER SEAL (INSIDE CAP)	1	FACS	FACS	FACS
13	ENGINE MOUNTING BRACKET	1	204	204	204
14	COMPRESSOR GUARD SHIELD	1	CGS	CGS	CGS

INSTALLATION INSTRUCTIONS:

1. Before installing engine mounting bracket (13) to the engine, the 3 leg bracket pump bracket (7) or engine adapter rings must be bolted to the engine mounting bracket and the engine mount bolts (6) must be fitted into place as illustrated. The spring loaded portion of the water pump seal (5) must then be installed in the 3 leg adapter. Place this portion of the seal into the center as shown, with the use of a seating tool (WPK3) and a light hammer. Care must be taken to avoid contact with the carbon portion of the seal. A small amount of silicone sealant is placed in this section to ensure that a water tight seal is accomplished. Insert the three mounting bracket bolts (6) into the engine mounting plate (13) to attach the 3 leg adapter as illustrated. Align the 3 leg pump bracket (7) in the proper position to the engine mount bracket. Tighten evenly, to prevent mis-alignment. If you are installing the compressor mount bracket, be sure to place engine pulley, with drive belt attached, onto the engine shaft, before mounting this assembly to the engine. Make sure to tighten the set screw on the pulley. Be sure to install BELT SHROUD before use. IF NOT AVAILABLE CONSULT WITH FACTORY.

2. Place the ceramic portion of the water pump seal (4) firmly into the center of the impeller, using the heel of your hand to insure a proper fit. Lubricate the outer portion of the seal to assist in proper placement of this portion of the seal. The smooth ceramic surface of the seal must be facing outwards. Thread the impeller onto the shaft in a clockwise fashion, by turning gently, taking care to avoid damaging the threads on the impeller.

3. Fit the pump gasket (10) onto the 3 leg mount bracket (7) and align holes before attaching the pump housing. Attach pump housing (2) to the mounting plate, using the housing bolts and washers (8 & 8A). Tighten housing bolts evenly, to ensure proper tension and alignment. Just snug the bolts up. The paper gasket may leak for the first 5 minutes until the gasket begins to swell, as it fills with water. Extreme care must be taken to prevent over tightening of the bolts. Too much torque will damage threads in the pump housing.

ALWAYS REMEMBER THAT RUNNING YOUR PUMP DRY WILL LEAD TO POSSIBLE DAMAGE AND DESTRUCTION OF THE WATER PUMP SEALS. IT IS RECOMMENDED TO KEEP ON HAND, ONE WATER PUMP SEAL KIT AND ONE ADDITIONAL WATER PUMP SEAL WHEN WORKING IN AN ISOLATED AREA.