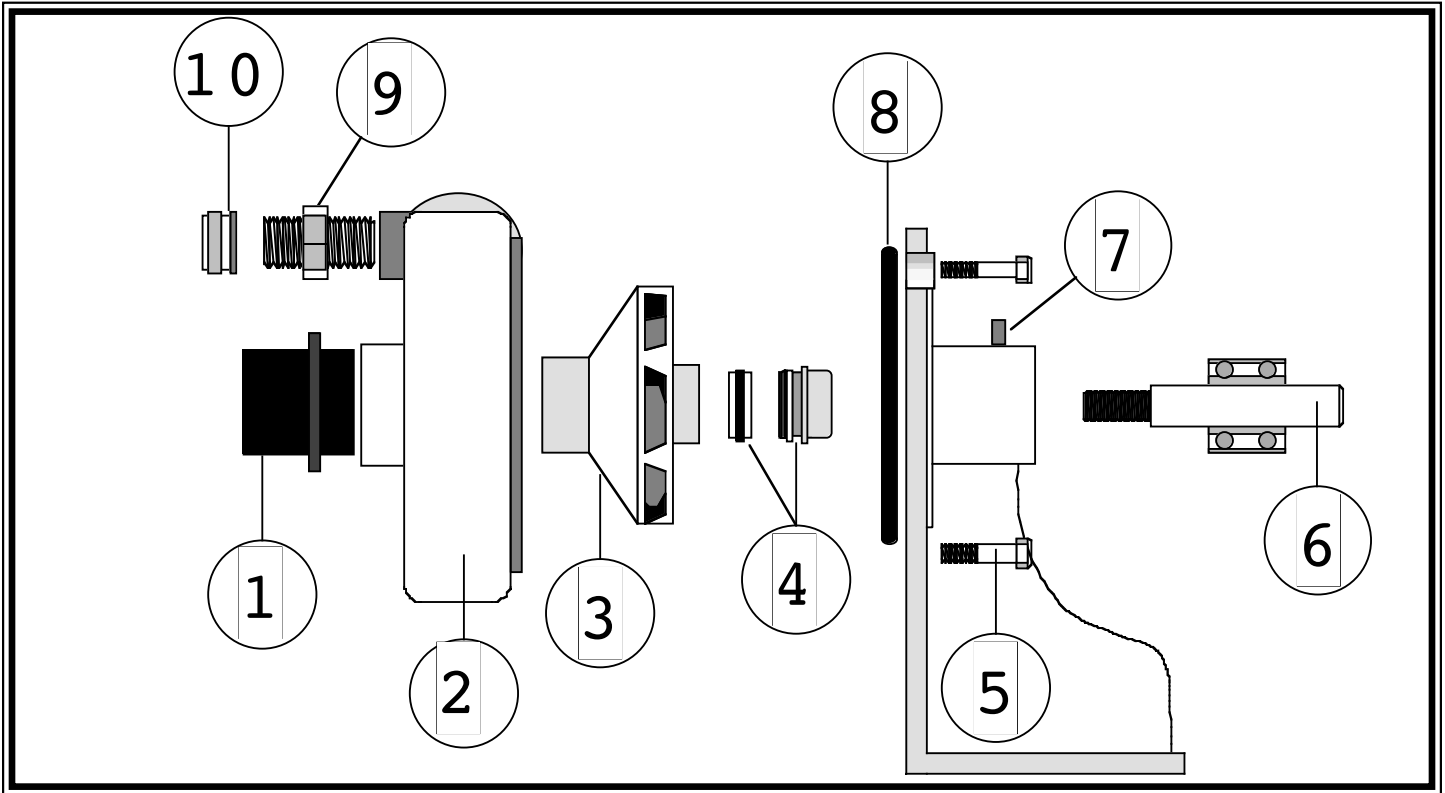


KEENE PEDESTAL PUMP BREAKDOWN



PARTS LIST

P95			P135			P195		
ITEM	DESCRIPTION	PART NO.	ITEM	DESCRIPTION	PART NO.	ITEM	DESCRIPTION	PART NO.
1	HOSE ADAPTER	N/A	1	HOSE ADAPTER	HA15	1	HOSE ADAPTER	HA25
2	PUMP HOUSING	951	2	PUMP HOUSING	101	2	PUMP HOUSING	181
3	IMPELLAR	952	3	IMPELLAR	102	3	IMPELLAR	182
4	WATER PUMP SEAL	WPS1	4	WATER PUMP SEAL	WPS2	4	WATER PUMP SEAL	WPS2
5	HOUSING MOUNT BOLT	2HB	5	HOUSING MOUNT BOLT	2HB	5	HOUSING MOUNT BOLT	2HB
6	BEARING AND SHAFT	125B	6	BEARING AND SHAFT	125B	6	BEARING AND SHAFT	125B
7	SET SCREW	AS1	7	SET SCREW	AS1	7	SET SCREW	AS1
8	GASKET	104	8	GASKET	104	8	GASKET	104
9	FLUSHER ADAPTER	FA	9	FLUSHER ADAPTER	FA	9	FLUSHER ADAPTER	FA
10	ADAPTER CAP	FAC	10	ADAPTER CAP	FAC	10	ADAPTER CAP	FAC
11	PEDESTAL	904	11	PEDESTAL	125P	11	PEDESTAL	125P

P285			P355			P355S		
ITEM	DESCRIPTION	PART NO.	ITEM	DESCRIPTION	PART NO.	ITEM	DESCRIPTION	PART NO.
1	HOSE ADAPTER	HA25	1	HOSE ADAPTER	N/A	1	HOSE ADAPTER	N/A
2	PUMP HOUSING	281	2	PUMP HOUSING	351	2	PUMP HOUSING	301
3	IMPELLAR	282	3	IMPELLAR	352	3	IMPELLAR	302
4	WATER PUMP SEAL	WPS3	4	WATER PUMP SEAL	WPS3	4	WATER PUMP SEAL	WPS3
5	HOUSING MOUNT BOLT	2HB	5	HOUSING MOUNT BOLT	2HB	5	HOUSING MOUNT BOLT	2HB
6	BEARING AND SHAFT	275B	6	BEARING AND SHAFT	275B	6	BEARING AND SHAFT	275B
7	SET SCREW	AS1	7	SET SCREW	AS1	7	SET SCREW	AS1
8	GASKET	208	8	GASKET	208	8	GASKET	208
9	FLUSHER ADAPTER	FA	9	FLUSHER ADAPTER	FA	9	FLUSHER ADAPTER	FA
10	ADAPTER CAP	FAC	10	ADAPTER CAP	FAC	10	ADAPTER CAP	FAC
11	PEDESTAL	275P	11	PEDESTAL	275P	11	PEDESTAL	275P

INSTALLATION INSTRUCTIONS

Before mounting pump, insure that pulleys are properly aligned and tightened firmly. Recommended pulley size is a 4" diameter. Minimum belt size is 4L (1/2" wide) Rotation of the pump is COUNTER CLOCKWISE. Water must be present in the pump before running it. For the best results use **Keene Engineering Foot Valves**.