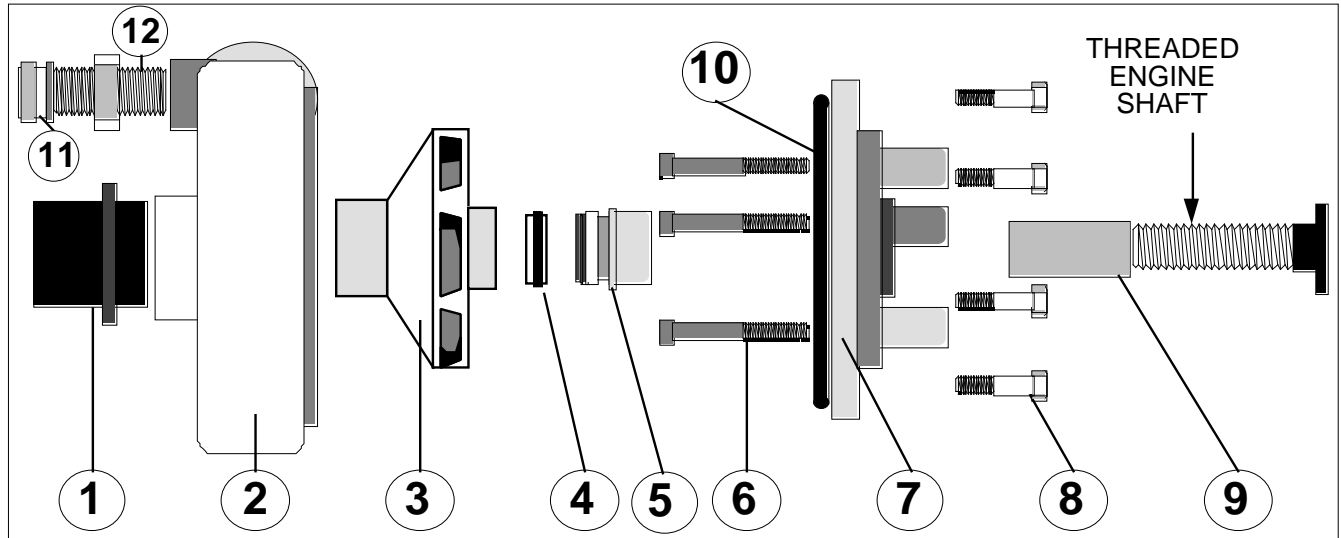


# CENTRIFUGAL PUMP ASSEMBLY

## STANDARD 5/8" TREADED SHAFT ENGINE



### P100 and P180 PUMPS

ITEM	DESCRIPTION	QUANTITY	P100	P180
			PART NO.	PART NO.
1	HOSE ADAPTER	1	HA1	HA1
2	OUTER HOUSING	1	101	181
3	IMPELLAR	1	102	182
4	PUMP SEAL (CERAMIC SEAL)	1	WPS2(P.T.1)	WPS2(P.T.1)
5	PUMP SEAL (SPRING & CASING)	1	WPS2(P.T.2)	WPS2(P.T.2)
6	MOUNTING PLATE BOLT	3	MB	MB
7	MOUNTING(BACK) PLATE	1	105	105
8	HOUSING BOLT	4	HB	HB
8A	HOUSING BOLT WASHERS	4	HW	HW
9	SHAFT BUSHING	1	SB	SB
9A	COMPRESSOR DRIVE	1	P3	P3
10	"O" RING(GASKET)	1	104	104
11	FLUSHER ADAPTER CAP	1	FAC	FAC
12	FLUSHER ADAPTER	1	FA	FA
13	FAC RUBBER SEAL(INSIDE CAP)	1	FACS	FACS

#### INSTALLATION NOTES:

The rotation of all is counter-clockwise. Water must be contained within the pump while it is running. Do not run the pump dry, as it will damage the pump seal and may lead to the need to replace the seal. To ensure continuous performance, it is always a good idea to carry a spare seal, in case you need to replace it. For maximum pump performance, use only Keene Engineering foot valves.

#### INSTALLATION INSTRUCTIONS:

1. Before installing the mounting plate (7) to the engine, the spring portion of the water pump seal (5) must be installed. Place this portion of the seal into the center of the mounting plate, with the use of a light hammer and or blunt instrument and a seal setting tool. Tap the perimeter metal portion of the seal to set the seal into position. Care must be taken to avoid contact with the carbon portion of the seal. A small amount of Silicone Rubber Cement placed in this section will insure a water tight seal. Insert the FOUR mounting bolts (6) into the mounting plate (7). Tighten the bolts evenly so as to prevent mis-alignment.
2. Fit "O" Ring gasket (OR1) into "O" slot on the front face of the mounting plate, making sure that it is properly seated. Place the ceramic portion of the water pump seal (4) into the center of the impeller (3) firmly, using the heel of your hand to insure a proper fit. The ceramic surface of the seal must be facing outwards. Thread the impeller onto the engine shaft by turning it gently in a clockwise rotation, taking care to avoid damage to the threads on the impeller.
3. Attach the outer housing (2) to the mounting plate, using the housing bolts (8) and washers (8A). Tighten the housing bolts evenly to ensure proper tension and alignment. Extreme care must be taken to prevent over tightening of the bolts. Too much torque will damage the threads in the outer housing.